

SPEC SHEET + MEASUREMENTS



Outdoor Research® 800 Tech Down Jacket. OR322228

Product photo

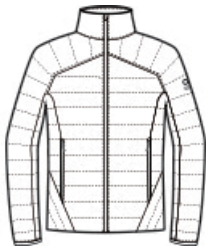


We're proud to offer this limited edition Outdoor Research style, while supplies last. When performance and durability are critical to the success of your adventure, the 800 Tech Down Jacket is the superior choice. Engineered with Pertex® Quantum 100% recycled nylon ripstop with anti-abrasion Diamond Fuse technology, this jacket uses RDS-approved natural down for exceptional insulation and warmth. On the trail or on your daily commute, the 800 Tech Down Jacket is both versatile and stylish.

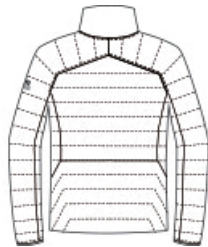
Specs & Features

- Constructed of bluesign® approved materials
- 100% recycled Pertex® Quantum 100% polyester ripstop shell with anti-abrasion Diamond Fuse technology
- 12.6-ounce, RDS-certified 800+ fill-power down insulation throughout
- Water-resistant
- Wind-resistant
- Reverse coil center front zipper
- No-snap webbing behind center front zipper
- Brushed tricot-lined reverse coil zippered hand pockets
- Dual interior stash pockets
- Low-Pro Binding™ at cuffs
- Contrast heat transfer OR logo on left sleeve
- Clean-finished elastic drawcord hem
- Packable left hand pocket doubles as a jacket stuff sack
- Open left chest space for ease of decoration

Sketches



front



back

Technologies

bluesign® Approved Materials: bluesign is a system that provides safer, more sustainable environments for people to work in and everyone to live in. Powered by a holistic approach, bluesign traces each textile's path along the manufacturing process, making improvements at every stage

SPEC SHEET + MEASUREMENTS



Outdoor Research® 800 Tech Down Jacket. OR322228

from factory floor to finished product. Simply put, bluesign changes the environmental impact of textiles for good.

Pertex® Quantum: 41% recycled Pertex Quantum with Diamond Fuse shell fabric offers exceptional durability and abrasion resistance without adding weight.

Diamond Fuse Technology: Pertex developed Diamond Fuse technology as a unique way of improving the durability and abrasion resistance of fabrics without adding any unnecessary weight. Diamond Fuse fabrics use yarns with unique diamond-shaped filaments that lock together to create a durable and highly abrasion-resistant fabric.

RDS Down: The Responsible Down Standard (RDS) safeguards the welfare of geese and ducks that provide down and feathers for the products we all love, independently certifying down and feathers against animal welfare requirements and tracking it from farm to final product.

CARE INSTRUCTIONS

Machine Wash Cold Separately, Rinse Thoroughly. Do Not Bleach. Tumble Dry Low Or Line Dry In Shade. Do Not Iron. Do Not Dry Clean.

SPEC SHEET + MEASUREMENTS



Outdoor Research® 800 Tech Down Jacket. OR322228

PRODUCT MEASUREMENTS

	XXXL	S	M	L	XL	XXL
Body Length at Back	31 7/8	27 1/2	28 3/8	29 1/4	30 1/8	31
Chest	29 1/4	20 3/4	22	23 1/2	25 1/4	27 1/4
Sleeve Length from Center Back	39	35	36	37	38	38 1/2

Body Length at Back: Measured from high point shoulder to finished hem at back.

Chest: Measured across the chest one inch below armhole when laid flat.

Sleeve Length from Center Back: Measure from Center Back neck to shoulder point to sleeve hem.

SIZE CHARTS

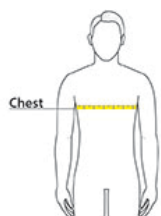
	XXXL	S	M	L	XL	XXL
Chest	52 - 56	36 - 38 1/2	38 1/2 - 41 1/2	41 1/2 - 44 1/2	44 1/2 - 48	48 - 52

SPEC SHEET + MEASUREMENTS



Outdoor Research® 800 Tech Down Jacket. OR322228

HOW TO MEASURE



CHEST

Measure under the arm and around the fullest part of the chest with arms down, keeping tape horizontal.

COLORS



Black
PMS BLACK
C



Naval Blue
PMS 2380C